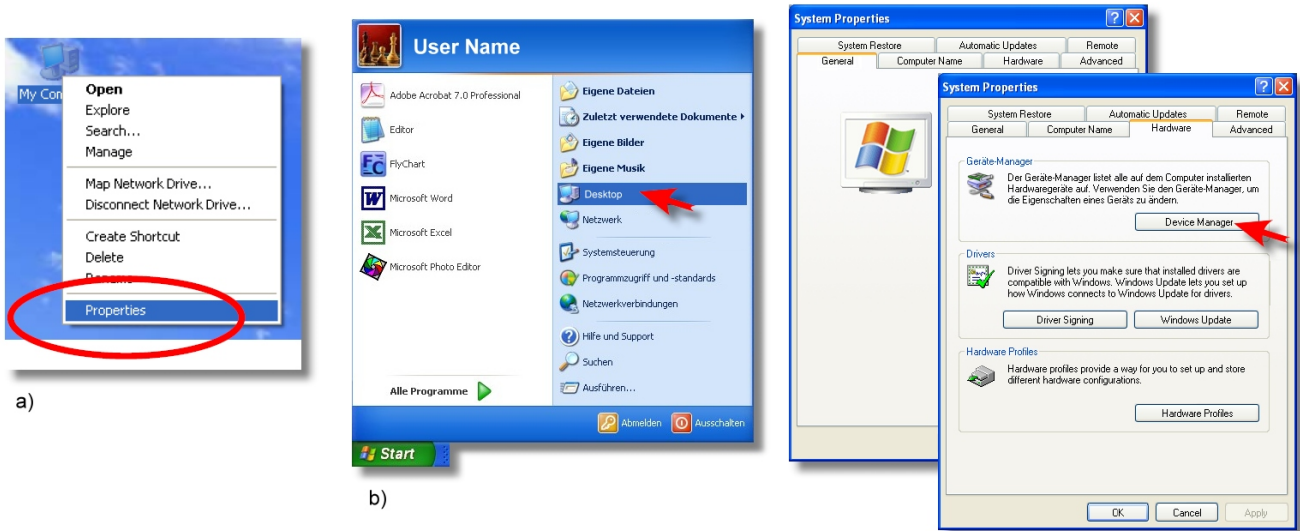


Changing the COM Port number

If a COM Port problem appears

The Firmware Flasher tool cannot handle COM Ports with numbers higher than 9.

If you use Bluetooth hardware or a lot of other USB devices, the driver assigns a higher number to this Port. To use the Firmware Flasher, you have to change the COM Port number.



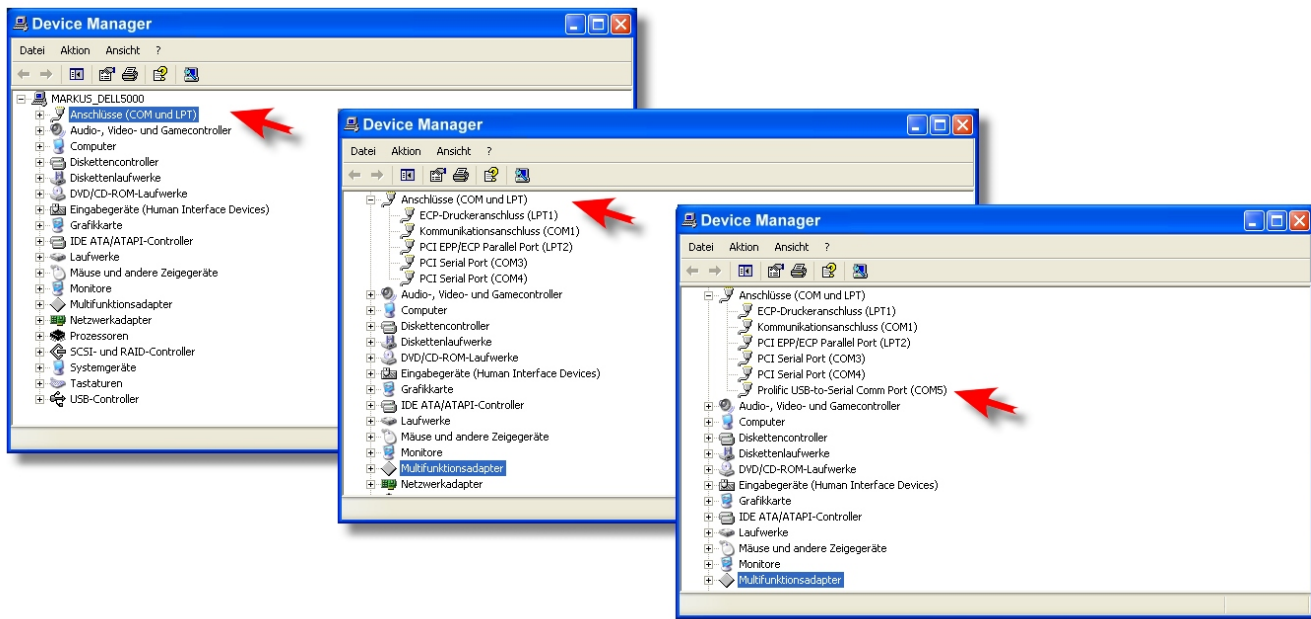
a) Open the Desktop with a right-click on the **Desktop** symbol > choose **Properties**.

b) Open the Desktop over **Start > All Programs > Desktop** With a right-click on the symbol you choose **Properties**. The window **System Properties** opens.

- In **System Properties** choose the Register-Card **Hardware > Device Manager**

To verify the COM Port you must connect the Flytec instrument via USB cable to the PC!

In (COM and LPT) the new **Prolific USB-to-Serial Comm Port** must appear. (note the COM Port number)



It is necessary that the COM Port is between 1-9.

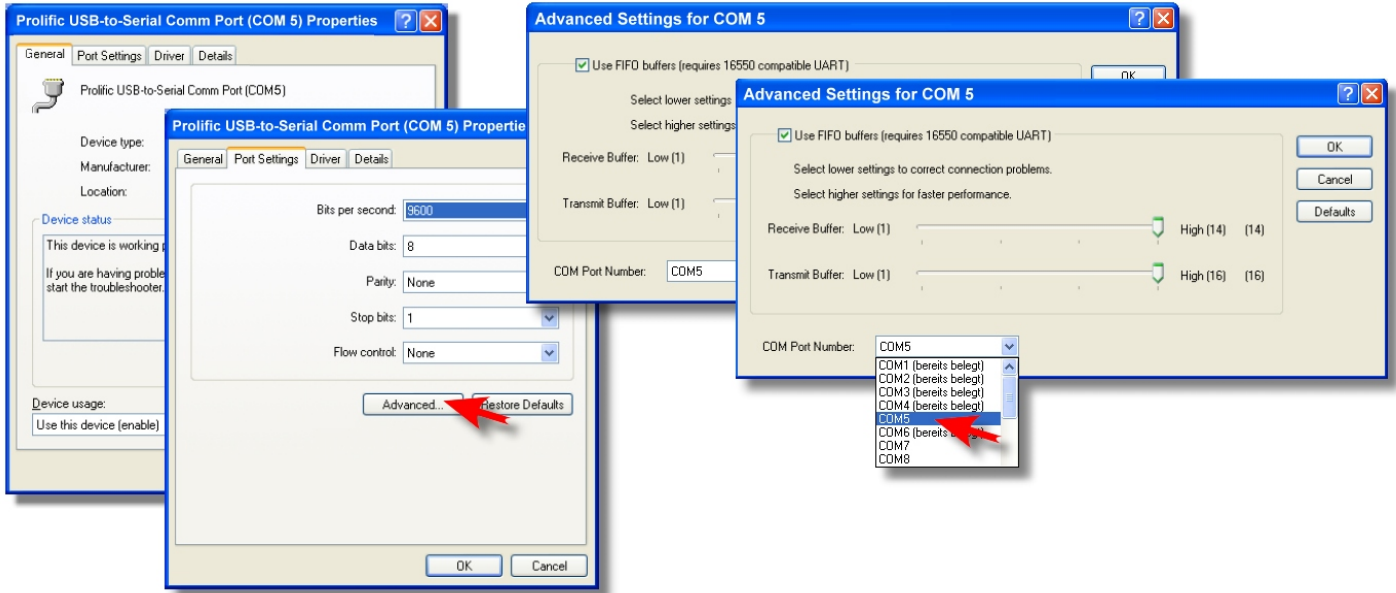
Otherwise you must assign a free COM Port in the **Device Manager** (e.g. COM5)

Advanced Settings for COM Port

Right click on the active **Prolific USB-to-Serial Comm Port (COMx) > Settings**

The window **Prolific USB-to-Serial (COMx) Properties** opens.

Choose the Register-Card **Port Settings > Advanced > COM Port Number**



Here you can change the COM Port number. Try to find a COM Port number between 1 and 9 which is not in use. If all COM's are marked as (already in use), you can still assign a number, because Flychart uses this port only during data transfer. It can be that another program, which you do not use regularly, has made a reservation, or that an already uninstalled program has made this reservation. In this case you can use the number without problems. But if another programs uses this port the same time as Flychart uses it, it can be that you encounter driver problems in this case.

Adopt this COM Port in FlyChart > Extras > System Settings (e.g. COM5)

